



| Series | ZT400 - Sturdy, Simple, Smart | |
|-----------------------------|---|--|
| Features | <ul style="list-style-type: none"> • Tool-less printhead and platen roller replacement • RFID available on both 4" & 6" widths • Dynamic QR Codes enable on-demand, web-based support • Monitor, manage and maintain printers from any location with Print DNA • Replace ZM400/ ZM600 series | |
| Benefits | <ul style="list-style-type: none"> • Optional Colour Display • Bi-fold door for tight spaces • Simple Ribbon and Media Loading • Direct Connection to the Industrial Ethernet network via Zebra Network Connect • Print DNA includes productivity, management, development and visibility tools • Remotely manage printer from most locations | |
| Applications | <ul style="list-style-type: none"> • Work in Process • Package Labelling • Shipping/ Receiving • Pharmacy Labelling • Laboratory Labelling • Asset Tracking | |
| Model Specifications | ZT411 | ZT421 |
| Max Print Width | 4.09"/ 104mm | 6.6"/ 168mm |
| Max Print Speed/ Resolution | 14 ips @ 203dpi | 12 ips/305 mm per second |
| Memory | 512MB Flash/ 256MB RAM | 512MB Flash/ 256MB RAM |
| Connectivity - Standard | USB 2.0, high-speed, RS-232 Serial, 10/100 Ethernet, Bluetooth 4.1, Dual USB Host | USB 2.0, high-speed RS-232 Serial, 10/100 Ethernet Bluetooth 4.1, Dual USB Host |
| Connectivity - Optional | Wireless dual radio with 802.11ac Wi-Fi and Bluetooth 4.1 Parallel (bi-directional interface), Applicator interface | Wireless dual radio with 802.11ac Wi-Fi and Bluetooth 4.1 Parallel (bi-directional interface), Applicator interface |
| Media Handling Options | Peeler, Cutter, Liner Take Up, Full Rewind | Peeler, Cutter, Liner Take Up, Full Rewind |
| Ribbon Core | 25mm | 25mm |
| Ribbon Length | 450m | 450m |
| Media Core | 76mm/ 3" | 76mm/ 3" |
| Media Label Roll OD | 200mm/ 8" | 200mm/ 8" |



| Series | ZT600 - Intelligence and Industrial Brawn | |
|-----------------------------|--|---|
| Features | <ul style="list-style-type: none"> • All metal construction supports continuous heavy duty performance with high throughput • Easily integrate, manage and maintain from anywhere in the world with print DNA • Icon-based, multi-lingual graphical LCD user interface is intuitive to operator | |
| Benefits | <ul style="list-style-type: none"> • Supports the most versatile needs of any industrial printer • Ideal for high volume, high-speed applications • Supports high-res printing for micro-label applications, such as circuit boards, chips, miniature components • Built-in thermal management • Withstands exposure to challenging environments, dusty, debris extreme temperatures • Colour graphic display with intuitive icon based UI • Simple intuitive side loading with LED illuminated media path • Onboard sensors, diagnostics and help resources assist in solving problems • Print DNA gives anytime, anywhere visibility and control • Mobile device Management connectors | |
| Applications | <ul style="list-style-type: none"> • Work in Process • Product ID/ Serial Numbers • Shipping/ Receiving • Back-of-store Operations • Laboratory Labelling • Asset Tracking | |
| Model Specifications | ZT610 | ZT620 |
| Max Print Width | 4.09"/ 104mm | 6.6"/ 168mm |
| Max Print Speed/ Resolution | 14 ips @ 203dpi 12 ips @ 300dpi 6 ips @ 600dpi | |
| Memory | 1GB RAM, 2GB Flash | 1GB RAM, 2GB Flash |
| Connectivity - Standard | Serial, USB, Gigabit Ethernet, USB Host (2), Bluetooth 4.0 | Serial, USB, Gigabit Ethernet, USB Host (2), Bluetooth 4.0 |
| Connectivity - Optional | Parallel, 802. 11ac, Applicator Port, IPv6, Internal Gigabit Ethernet | Parallel, 802. 11ac, Applicator Port, IPv6, Internal Gigabit Ethernet |
| Media Handling Options | Tear-off, Cutter, Full Rewind/ Peel & Present | Tear-off, Cutter, Full Rewind/ Peel & Present |
| Ribbon Core | 25mm | 25mm |
| Ribbon Length | 450m | 450m |
| Media Core | 76mm/ 3" | 76mm/ 3" |
| Media Label Roll OD | 200mm/ 8" | 200mm/ 8" |

ScanPoint

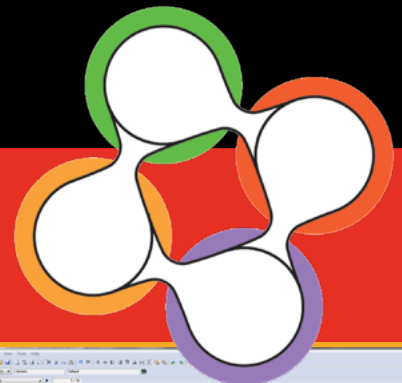
Scanpoint has been specifically designed to help reduce operator error and provide peace of mind on the line. Scanpoint ensures that only pre-set packaging data can be scanned and sent to CLARiNET™ connected coders, for greater ease of use, reduced downtime and waste.



How it works

- 1 Scan a coder
- 2 Scan a job to load
- 3 Scan a batch number
- 4 Job sent wirelessly to coder ready for print. ✓

Interested in learning more? Give us a call on 01159 640144



CLARiSUITE™

Integrated Coding Software

CLARiSOFT™

Label design software

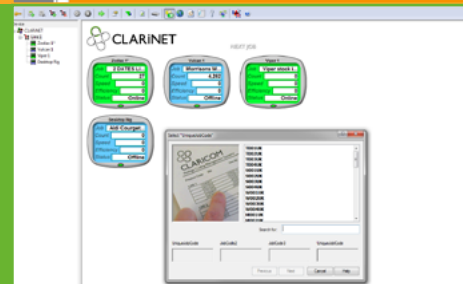
- › Design templates with drag and drop editing tool
- › Windows TrueType fonts for flexible label design
- › Multiple field types including text (bold, underline or italics), date and time , barcodes , graphics and shapes
- › Design templates with drag and drop editing tool



CLARiNET™

Printer networking software

- › Network capability for plant-wide solutions
- › Dashboard view of printer efficiency, performance and line stoppages
- › Printers can be placed into groups, allowing simultaneous data transfer to a number of printers
- › Connect ICE, Videojet and Zebra printers



CLARiTY™

Operator touchscreen

- › Design templates with drag and drop editing tool
- › Windows TrueType fonts for flexible label design
- › Multiple field types including text (bold, underline or italics), date and time, barcodes, graphics and shapes
- › Design templates with drag and drop editing tool

