

ZODIAC **EAGLE**

107mm Solid State Coder



INGREDIENTS & WEIGHT

...se syrup, Sugar, Starch,
Citric acid, Elderberry
...ct, Fruit And Plant
...trates, Orange,
...blackcurrant, Lemon,
...lmon fruit, Aronia,
...uring, Glazing
...ox, Carnauba
...ber complexes
...erob extract,
...rup.

TYPICAL VALUE PER 100gram UNIT

ENERGY 1421KJ
ENERGY 334Kcal
FAT 0.5g
of which saturate
CARBOHYDRATE
of which SUGAR
FIBRE
70g e
PROTEIN
SALT

ice

A 107mm printhead and airless design help to provide the lowest possible cost of ownership, and best in class ROI figures.

The ICE Zodiac Eagle is the first airless 107mm TTO, eliminating the need for expensive compressed air and avoiding conventional air and energy settings that operators might over-adjust.

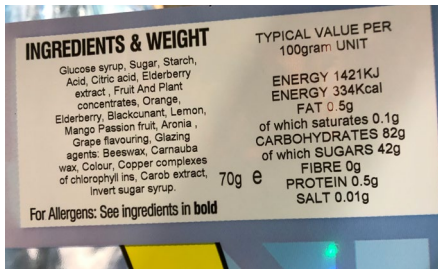
The ICE Zodiac Eagle is designed to be compact and modular and fits on to almost all production lines. Up to 1,200m ribbon capacity and a variety of ribbon economy modes maximises the time between ribbon changeovers, improving uptime.

- › Airless, all electronic printhead design with **Intelligent Motion™**
- › Modular design for OEM flexibility
- › Industry-leading simple cassette with 1,200m ribbon capacity
- › Top throughput up to 500 packs per minute
- › Easy usability with CLARITY™ interface to ensure the right code on the right product.



Next generation Thermal Transfer Overprinting

Our products are used widely throughout the snack food, bakery and confectionary markets, and demonstrate excellent performance in the frozen and refrigerated foods, meat and poultry, cosmetics and pharmaceutical industries.



Uptime advantage

- › Reduce costs and downtime, maximise printhead life and gain consistent print quality thanks to airless Intelligent Motion™ technology
- › Up to 1,200m ribbon capacity and a variety of ribbon economy modes help to maximise the time between ribbon changeovers

Built-in productivity

- › Using default settings you can maintain consistent code quality and avoid conventional air and energy settings that operators might over-adjust
- › Industry-leading simple cassette change designed for fast ribbon replacement to maximise uptime
- › 25% faster throughput than previous ICE TTO models

Easy usability

- › Small footprint with industry standard mounting features for easy integration
- › Simple operator interface
- › Designed to withstand tough production line environments
- › Minimal wear parts are easy to change out, improving production line uptime



Intelligent application

- › **CLARITY™** software helps to ensure that the right information is printed on the right package, time after time to meet regulatory demand
- › The ICE Zodiac Eagle is capable of printing on newer flexible film package types like resealable pouches, stick packs and sachets, offering customers more choice

Intelligent maintenance

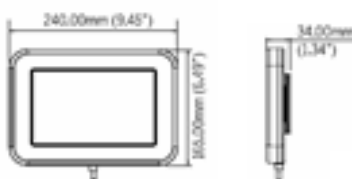
- › Limited wear components are fast and easy to change to help ensure that manufacturers are up and running as quickly as possible
- › The new printhead design requires no additional operator intervention to return to printing
- › On-board videos guide operators through routine maintenance and operator tasks including printhead cleaning and replacement.

CLARISUITE™

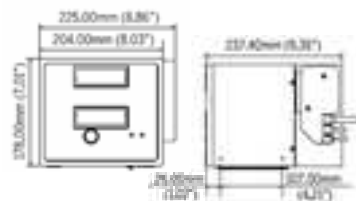
- › **CLARISOFT™** label design software provides simple drag and drop editing, the flexibility of Windows TrueType fonts, multiple field types, (such as **bold**, underline and *italics*), date and time, barcodes, graphics and shapes
- › **CLARINET™** networking software provides network capability for plant wide solutions and a dashboard view of printer efficiency, performance and line stoppages

Performance	
Printhead	107mm, 300dpi, 12dot/mm
Print area - intermittent motion mode	107mm (W) x 75mm (L)
Print area - continuous motion mode	107mm (W) x 300mm (L)
Ribbon width	55mm - 110mm
Maximum ribbon length	1200 metres
Print speed - Intermittent mode	10mm/sec - 600mm/sec*
Print speed - Continuous motion mode	1mm/sec - 1000mm/sec*
Maximum throughput mode, standard by software	up to 500 prints per minute*
Nominal ribbon waste between successive prints	0.5mm
* Print speeds and throughput are resolution, substrate, application and set up dependent	
General	
8" TFT SVGA (800x480) full colour touch screen operator interface	Clutchless bi-directional ribbon drive
Simple ribbon webbing	Ribbon saving features - radial ribbon save, interleaved ribbon save, intermittent stripes
Multiple operator languages	Job selection and database support as standard
On-board diagnostics	3 levels of password protection
Off-line set up and parameter storage	On-board memory, compact flash and/or expansion card
Software	
CLARISOFT™ Image Design Software	Flexible data/time formats with auto best before date calculation and concession management
Full downloadable font support for Windows TrueType (including multiple languages and Unicode support)	Auto increment/decrementing text, counters and barcodes
Fixed, variable and merged text fields and text blocks	Format for shift coding
Scalable text including rotation, mirror and inverse printing	User configurable drop-down list fields
Basic shape drawing	Link fields to databases
Multiple graphic formats supported, any size up to maximum area	Field orientation 0°, 90°, 180° and 270°
Mirror image printing, image rotation	128mb message store memory
Real-time clock functions	Barcodes EAN 8, EAN 13, UPC-A, UPC-E, Code 39, EAN 128, ITF, RSS, (including 2D composite codes), DataMatrix, QR; others available on request
Connectivity	
External inputs (fully software configurable)	External communications - 1 Serial port (RS232), 2 Ethernet ports, 2 USB ports, 15 Pin I/O connection, Binary and ASCII comms protocols and Windows drivers ZPL and SATO emulations
Parent/child unit - link up to 4 coders to a single controller and CLARITY™ control unit	CLARINET™ coder independent network management software
Host PC Mode (remote database) using CLARINET™	CLARITY™ Configuration Manager
Server unit - fully integrate user interface into packaging machinery	
Services	
Power supply	90 - 264V
Operating temperature	0°C - 40°C
Regulatory approvals	
Dimensions	MET N RTL CE Mark FCC

Control panel



Printer body



Power supply

