

# VULCAN PLUS

Print and Apply Labeller with Intelligent Motion™



Ice

# An expert labelling solution

Experience the evolution of the industry's proven Direct Apply labelling system.

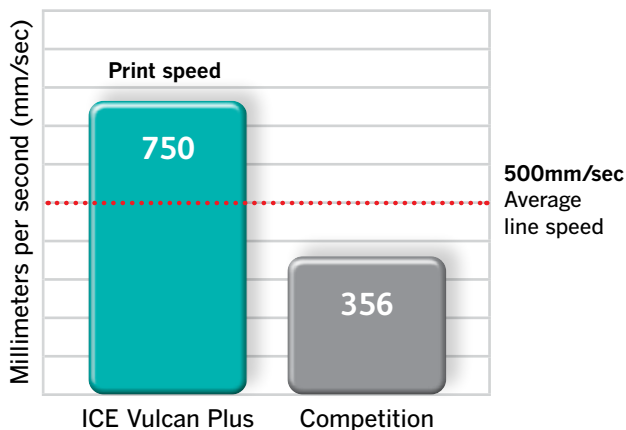
## Precision meets intelligence

Designed for the modern pace of high-speed labelling with industry-proven technology delivering consistent reliability and effortless operation. Without the need for compressed air and complex setups, this advanced system offers a straightforward user interface and state-of-the-art Wi-Fi connectivity to streamline your end-of-line processes with unmatched simplicity and efficiency.



### Print & apply pack labelling speeds\*

\*@300dpi resolution, standard 6x4" label



### Why Direct Apply?

Simultaneously print and apply a label onto a passing pack at the speed of the conveyor, without the need for a tamp applicator.

- Eliminate label jams for common top or side labelling applications
- Up to 150 packs per minute (label size dependent) without the use of a tamp applicator
- Maintain throughput, even when the packs are accumulated
- No compressed air needed, eliminating both the installation cost and the ongoing running costs



## What is unique about the ICE Vulcan Plus design?

Simplify communication and integration with embedded Wi-Fi 

Precise and automatic control of the entire system thanks to **Intelligent Motion™**, with no slipping clutch, nip rollers or manual adjustments

Our user interface delivers a single point of set-up and control for the whole machine

Simple web path enables label and ribbon change in less than 60 seconds

Save time with collapsible mandrel for quick label changeovers

Reduce set-up time and errors while maximising availability from a proven print engine and label tension control system

Seamless connectivity with warehouse management systems and advanced emulation capabilities 

Industry-leading near edge printhead technology allows for high-speed print and apply labelling

# A consistent labelling solution

Remove end-of-line inefficiencies and costs in your labelling operations.



**Intelligent Motion™**

Traditional print and apply labellers often fail to meet the performance demands of today's packaging operation. To achieve a breakthrough design, you first need to understand where things might go wrong.

Patented Intelligent Motion™ technology delivers automatic control of the system and eliminates the added parts and adjustments that can make other labelling machines fail.

The ICE Vulcan Plus reduces the 5 most common reasons for downtime\*

1. Label jams
2. Web jams
3. Ribbon breaks
4. Mechanical adjustments
5. Mechanical failures

\* Compared to tamp applications

## How does Intelligent Motion™ technology eliminate common pain points?

- ✓ A direct drive controls label speed and position without clutches, rollers or adjustments
- ✓ Electronic supply reel automatically adjusts and maintains tension irrespective of speed and label size from start to end of reel
- ✓ Printhead pressure is automatically regulated to help ensure optimum print quality and printhead life
- ✓ Precise ribbon control enables a clutch-less ribbon drive and ribbon save mode

# An adaptable labelling solution

With ambitious production goals,  
with seamless connectivity and  
compatibility.



## Key benefits:

- Modular design allows for use of applicators if needed
- Simple and fast integration with OEM packaging systems
- Reduce operator set up errors and job selection with leader/follower functionality
- Switch to the ICE Vulcan Plus without having to re-build previous job files and get up and running fast
- Dual printer synchronisation feature allows for zero downtime



## Less wires, less mess

The ICE Vulcan Plus includes embedded Wi-Fi\* for secure remote access and analytical capabilities.

\*Subject to availability in your country

## Fluent in your factory's communication language

### Label design

Compatible with any label design software including CLARiSOFT®, BarTender®, NiceLabel®, TEKLYNX®, Loftware and others.

### Emulation

Replicate the behaviour of other systems including Zebra® (ZPL), SATO™ (SBPL) and CoLOS™ (DCP and CIMCOMMS).

### Control

Designed for seamless integration into production and control networks using EtherNet/IP™ and ProfiNet® protocols.

EtherNet/IP™

PROFI  
NET

# An easy-to-use labelling solution

Simple, efficient user interface, reducing risk of operator error



## Key benefits:

- Only one simple 8-inch user interface for easy control
- Onboard support videos guide the operator through routine maintenance tasks
- Reduce operator intervention with rapid job selection using bar code scanner
- Flexibility to position screens remotely
- Ability to access the interface on a connected network, including via mobile devices
- Eliminate data entry errors and reduce operators touches, helping to ensure products are coded correctly

## Access the printer, anywhere.

### Real-time remote visibility

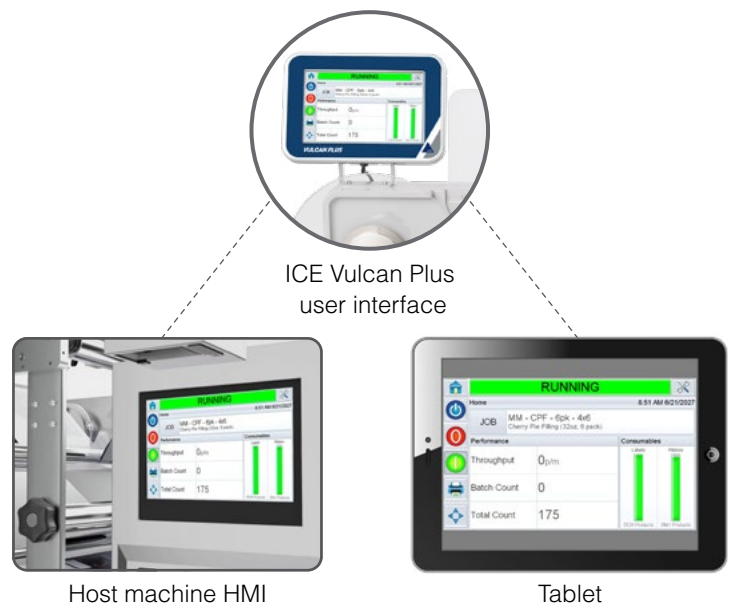
Remote service provides real-time information on printer issues, allowing ICE experts and your technicians to monitor equipment status, troubleshoot issues, and improve long-term performance.



\*Subject to availability in your country

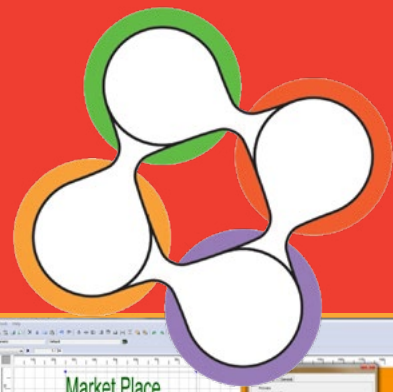
### Remote interface control

Establish preferred point of control with web server – in the office, on the line or anywhere in your factory network.



# CLARISUITE™

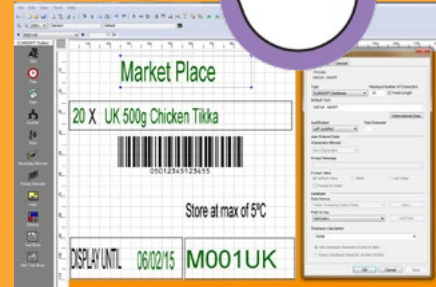
Integrated Coding Software



## CLARISOFT™

Label design software

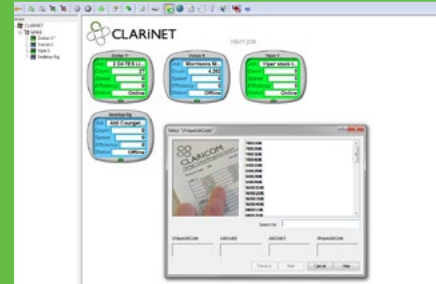
- › Design templates with drag and drop editing tool
- › Windows TrueType fonts for flexible label design
- › Multiple field types including text (bold, underline or italics), date and time, barcodes, graphics and shapes
- › Design templates with drag and drop editing tool



## CLARINET™

Printer networking software

- › Network capability for plant-wide solutions
- › Dashboard view of printer efficiency, performance and line stoppages
- › Printers can be placed into groups, allowing simultaneous data transfer to a number of printers
- › Connect ICE, Videojet and Zebra printers



## CLARITY™

Operator touchscreen

- › Design templates with drag and drop editing tool
- › Windows TrueType fonts for flexible label design
- › Multiple field types including text (bold, underline or italics), date and time, barcodes, graphics and shapes
- › Design templates with drag and drop editing tool



## A Clearmark solution, tailored to your needs

We deliver more than simply a printer out of the box, we design and create innovative solutions to meet your coding challenges. Bringing together ICE and Zebra coding and labelling technology with the expertise and commitment of the Clearmark team, no matter what the task may be, we'll help you stay one step ahead of the pack with unparalleled systems, service and support.

T: +44 (0)1159 640144

E: [enquiries@clearmark.uk](mailto:enquiries@clearmark.uk)

📍 Sherwood Park, NG15 0DP

🌐 Clearmark Solutions

Take a look at our  
virtual demo room



[www.clearmark.uk](http://www.clearmark.uk)

## Printer

Application method	Direct Apply (standard with Intelligent Motion™ label drive Optional applicators: Front of Pack, Rear Corner Wrap, and Telescopic Tamp
Print technology	Direct thermal transfer printing - with minimum 53mm, standard 107mm and larger 160mm printhead models available
Printhead replacement	Tool free quick release printhead replacement
Print speed	40-750mm/sec
Throughput	Up to 350 packs per minute, dependent on line speed and pack size only
Print resolution	300dpi/200dpi emulation mode

## Ribbon

Ribbon width	55mm, 76mm, 110mm and 162mm
Ribbon length	Up to 830m, including automatic ribbon save (<1mm ribbon gap between successive prints irrespective of label size or speed) Low ribbon and end of ribbon detection with predicted changeover time built in as standard

## Label

Media type	Thermal transfer or direct thermal paper labels
Width/length	50 - 165mm/ 50 -300mm
Capacity	Up to 400mm spool diameter (typically delivers over 9000 typical GS1 barcode labels per roll). Low labels and end of label detection with predicted changeover time built in as standard. Automatic adjustment for label/backing type and label size.
General	
8" touch screen operator interface	On-board diagnostics
Full-colour LCD touch panel interfact WYSIWYG print preview	On-board memory, compact flash and/or expansion card
3 levels of password protection	Job selection and database support as standard

## Software

CLARISOFT® Image Design Software	Auto best before date calculation and concession management
Full downloadable font support for Windows TrueType fonts (including multiple languages and Unicode support)	Scalable text including rotation, mirror and inverse printing
Fixed, variable and merged text fields	Flexible date/time formats
Link fields to databases	Real-time clock functions
Formats for shift coding	Auto increment/decrementing text, counters and barcodes
Mirror image printing, image rotation	Multiple graphic formats supported (up to maximum print area)
Basic shape drawing	1GB on-board label database, sufficient for 62,000 typical GS1 bar code label designs
Barcodes EAN8, EAN13, UPC-A, UPC-E, CODE 39, CODE128, EAN128, GS1 DataBar (including 2D composite), DataMatrix, QR, PDF417	

## Communications

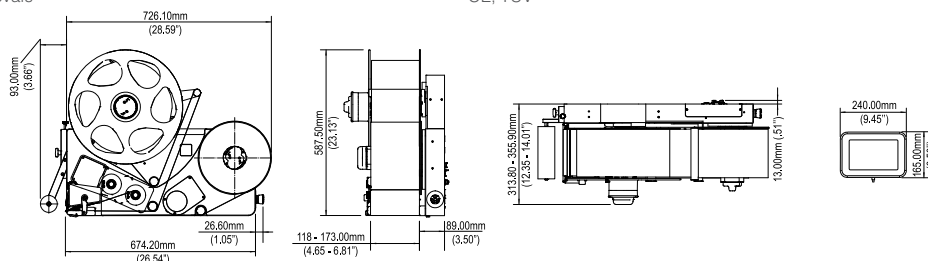
Compatible with CLARISUITE™	Binary and ASCII comms protocols
Compatible with any label design software which support Zebra and Sato print engines Zebra (ZPL), Sato (SBPL) and Markem-Imaje (Cimcomms, DCP) protocol support	

## Connectivity

Ethernet	Power-over-Ethernet
RS232	Configurable I/O (24V, PNP and volt free)
USB (for backup/restore and label upload)	Web browser

## Services

Air consumption	No air required for standard direct apply labelling
Power supply	90-260VAC (115W at 50 packs per minute)
Operating temperature	5°C - 40°C
Weight	40kg (max, excluding ribbon and labels)
Regulatory approvals	CE, TUV



Standard 107mm model shown.

Clearmark Solutions Ltd, Olympic House, 1 Willow Drive, Sherwood Park, Nottingham NG15 0DP

T: +44 (0)1159 640144 E: enquiries@clearmark.uk W: www.clearmark.uk

Follow us on LinkedIn  Clearmark Solutions

052024